

Concerto for Horn in E \flat Major, K. 417

Basso

Wolfgang Amadeus Mozart (1756-1791)

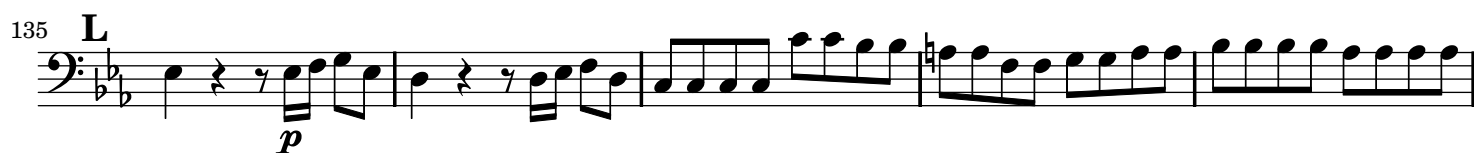
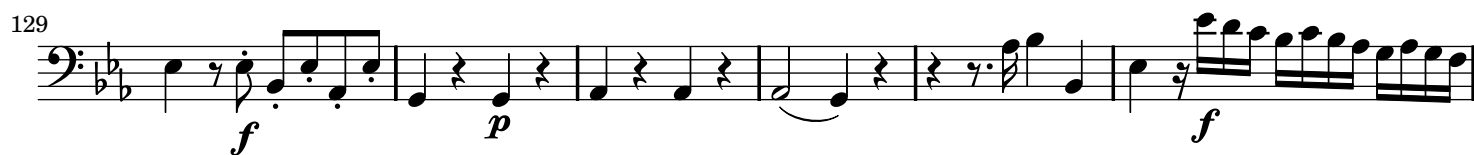
Allegro maestoso

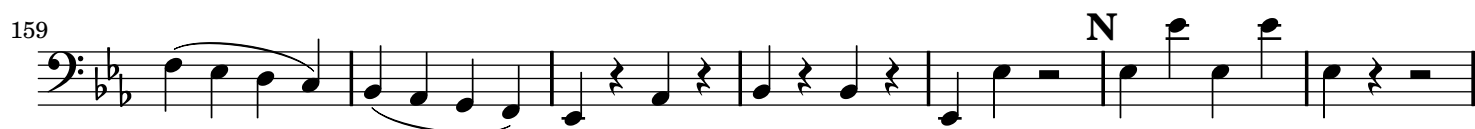
Musical score for the bass line of "The Swan" by Camille Saint-Saëns. The score is written in bass clef with a key signature of two flats (B-flat and E-flat) and a common time signature (C). The tempo is marked "Allegretto". The score consists of 64 measures, divided into eight systems of eight measures each.

The score includes the following dynamic markings and section labels:

- Measures 1-4: *p* (piano)
- Measures 5-9: *f* (forte), *p* (piano), *f* (forte), *p* (piano), *f* (forte)
- Measures 10-16: *p* (piano)
- Measures 17-21: *f* (forte)
- Measures 22-26: *p* (piano), Section A
- Measures 27-32: *f* (forte), Section B
- Measures 33-37: *p* (piano)
- Measures 38-42: *f* (forte)
- Measures 43-47: Section C
- Measures 48-52: Section D
- Measures 53-56: *f* (forte)
- Measures 57-64: *f* (forte)

Public Domain







79

87

96 **D**
p

103 *f*

110 **E**
p

119 **F**
sf

130 *f*

140 *p* *p*

150 **Più Allegro**
p

157 *f*

164 *f*

The image displays a page of sheet music for the Bassoon (Basso) part, spanning measures 79 to 164. The music is written in bass clef with a key signature of two flats (B-flat and E-flat). The notation includes various musical symbols such as notes, rests, slurs, and dynamic markings. Key features include:

- Measure 79: Starts with a half rest followed by eighth notes.
- Measure 87: Features a half rest followed by eighth notes, with a forte (*f*) dynamic marking.
- Measure 96: Marked with a 'D' (likely a fingering or breath mark) and a piano (*p*) dynamic.
- Measure 103: Features a forte (*f*) dynamic.
- Measure 110: Marked with an 'E' and a piano (*p*) dynamic.
- Measure 119: Marked with an 'F' and a sforzando (*sf*) dynamic.
- Measure 130: Features a forte (*f*) dynamic.
- Measure 140: Features piano (*p*) dynamics.
- Measure 150: Marked 'Più Allegro' and features a piano (*p*) dynamic.
- Measure 157: Features a forte (*f*) dynamic.
- Measure 164: Features a forte (*f*) dynamic.