

Symphony No. 3 in E \flat Major

Eroica

Oboe II

Ludwig van Beethoven (1770-1827)

Op. 55

Allegro con brio (♩. = 60)

[illegible]

26 

36

ff *sf* *sf*

A 10

55 

67

Measure 67: Treble clef, key signature of two flats (Bb, Eb). The measure contains a series of eighth and sixteenth notes with rests, ending with a half note G4.

[illegible]

86

5

13

D

cresc.

sf >

cresc.

f sf sf sf sf sf

113 

125

Example 125

136

Example 136

146 *cresc. ff*

193 *ff*

207 *p f ff*

225 *sf ff sf sf sf sf sf sf ff*

259 *sf sf sf sf sf sf ff sf sf sf sf sf sf*

270 *ff sf sf sf sf sf sf sf sf sf sf sf f*

281 *f f f f sfp sfp sfp*

294 *cresc. p f*

310 *sf*

318 *sf sf ff p*

345 *p*

358 **L** 6 **26**
cresc. *ff* *f* *f* *f* *f* *f*

401 **M** 29
ff *cresc.* *f* *sf* *sf*

440 *più f* *ff* *sf* *sf* *sf* *sf*

452 **N** 9 2 3 **O**
ff *p* *f*

474

483 **P** 14
cresc. *ff* *p* <>

506 **Q** 7
cresc. *f* *sf* *sf* *sf* *sf* *ff* *sf* *sf*

522 2
sf *sf* *ff*

533 **R** 8
sf *sf* *sf* *sf* *sf* *sf* *cresc.*

550 **S** 5
ff *f* *f* *f* *f* *f* *p* *ff*

566 17
p *p* *sf* *sf* *sf*

593 T 23

p sf sf cresc. decresc.

626 U

p cresc. p

636 V 7

p cresc.

655

sf f

663

sf sf sf sf

673 W

ff p cresc.

685

f f f f ff

Marcia funebre

Adagio assai (♩ = 80)

11 A 22

cresc. decresc. p

39

f p

46 B 5

decresc. cresc. sf p cresc. f

Maggiore

60 *f sf > p* 3 7

76 *ff sf sf sf sf p cresc.* [C]

84 *p f sempre più f ff sf sf* 9

100 *sf sf f* 3 15 **Minore**

124 *ff sf* 5 [D]

135 *sf* 2

143 *sf sf*

148 *sf p* 2 11 [E]

166 *ff sf cresc.* 4 [F] 3

179 *decresc. p p cresc. > p* 4 6

194 *cresc p f p >* [G] 3

204 *f* *sf* *p* *cresc.* *f* *cresc.* **H** 16

227 *p cresc.* *pp* *sf* *p* 13

Scherzo

Allegro vivace (♩ = 116)

30 26 21 *sempre pp* *p*

84 3 **A** *ff*

96 *sf* *sf* *sf*

108 3 *p*

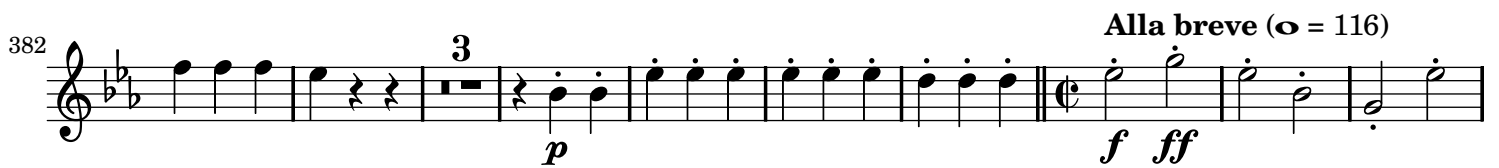
121 *f* *sf* *sf* *sf* *p* **B** 14 7

151 *p* *cresc. ff* 2

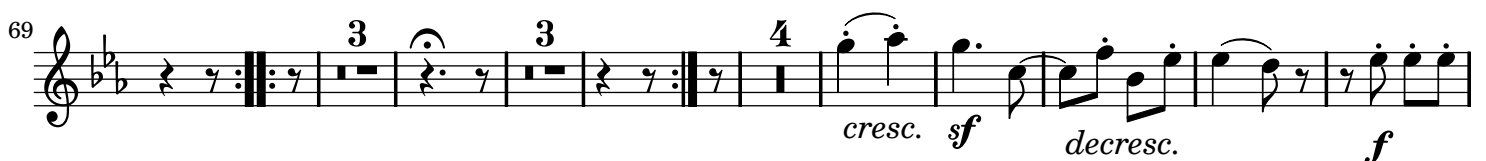
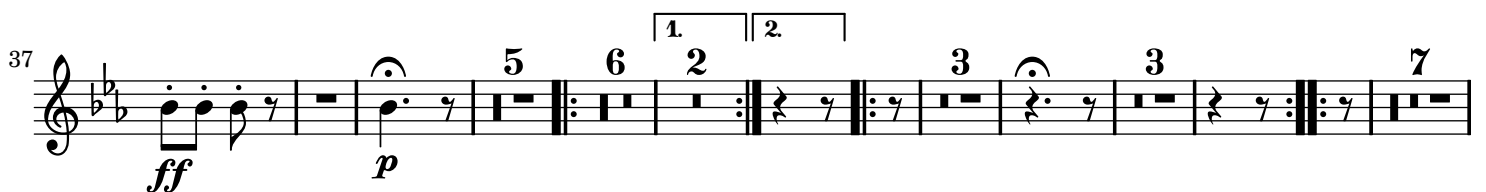
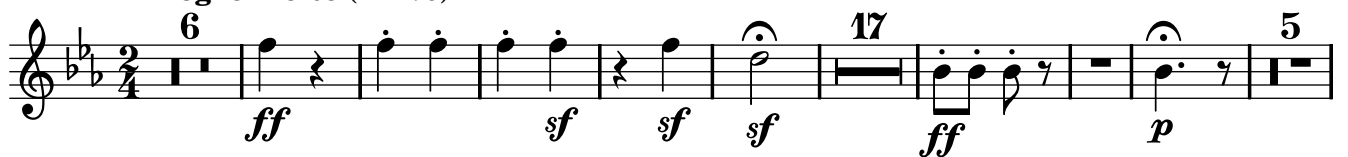
163 1. 2. **Trio 6** *f* *f* *f* *f* *f* *p*

179 6 16 2 25 *p* *f* *p*

236 21 3 59 *pp* *f* *sempre pp*



Finale

Allegro molto (♩ = 76)

100 *f* *f*

109 **A** *cresc.* *f* *ff* *cresc.* 4 26

147 *f* *sf* *sf* 2 6

165 *f* *f* *ff* *p* **B** 4 7

185 *p* *cresc.* 8

201 *sf* *sf* *sf* *ff* 3 3 3 3 3

211 **C** 28 *sf*

247

255 **D** *p* *ff* **E** 57

322

331 *sf* 2

Poco Andante (♩ = 108)

22

